



WET KITS for RIGID TRUCK

COMPLETE WET KITS

EFFICIENCY, SAFETY and **WEIGHT REDUCTION**, completed with the **HIGHEST QUALITY STANDARDS**: IPH Wet Kits are the pinnacle of top-level hydraulic products, designed and selected to boost the performance of any tipping gear.

Decades of experience in the development and production of original components for the majority of chassis manufacturers make us a **RELIABLE PARTNER**, attentive to every aspect to ensure customer satisfaction.

IPH Wet Kits are supplied with the **RECYCLED MATERIAL BASED COMPACT PACKAGING**, to improve logistic efficiency and customer internal handling.

Our Strengths:

- Research & development
- Production process efficiency and integration
- Quality assurance and control
- Supply chain efficiency
- Pre-sales full service
- After-sales assistance

WET KITS

& SERIES 5 FRONT END CYLINDERS:

THE PERFECT MATCH FOR YOUR GOALS



STANDARD CONFIGURATIONS

EIGHT STANDARD CONFIGURATIONS, studied to guarantee the best performance for your truck.

Our complete wet kit types:

- CYLINDER DIRECT MOUNT VALVE
- TIPPING VALVE ON TANK

You can combine the other components according to your needs, both pumps and pneumatic controls.

ENHANCED PERFORMANCE FOR DUMP BODIES ON AND OFF THE HIGHWAY



INTERPUMP HYDRAULICS, part of Interpump Group since 1997, with over 70 years history, is a global market leader in the development, production and distribution of hydraulic pumps, cylinders, PTOs and other hydraulics components for industrial vehicles.

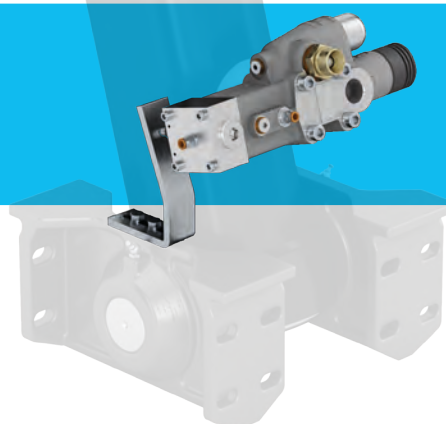
CYLINDER DIRECT MOUNT VALVE S160

Wet Kit K1100110015000	BLH + CP2000	p 8
Wet Kit K1100110016000	BLH + PM	p 9
Wet Kit K1100210806000	FOX LIGHT + CP2000	p 10
Wet Kit K1100210807000	FOX LIGHT + PM	p 11

OIL TANK



TIPPING VALVE
S160



PNEUMATIC CONTROLS

CP2000



PM



PUMPS

BLH

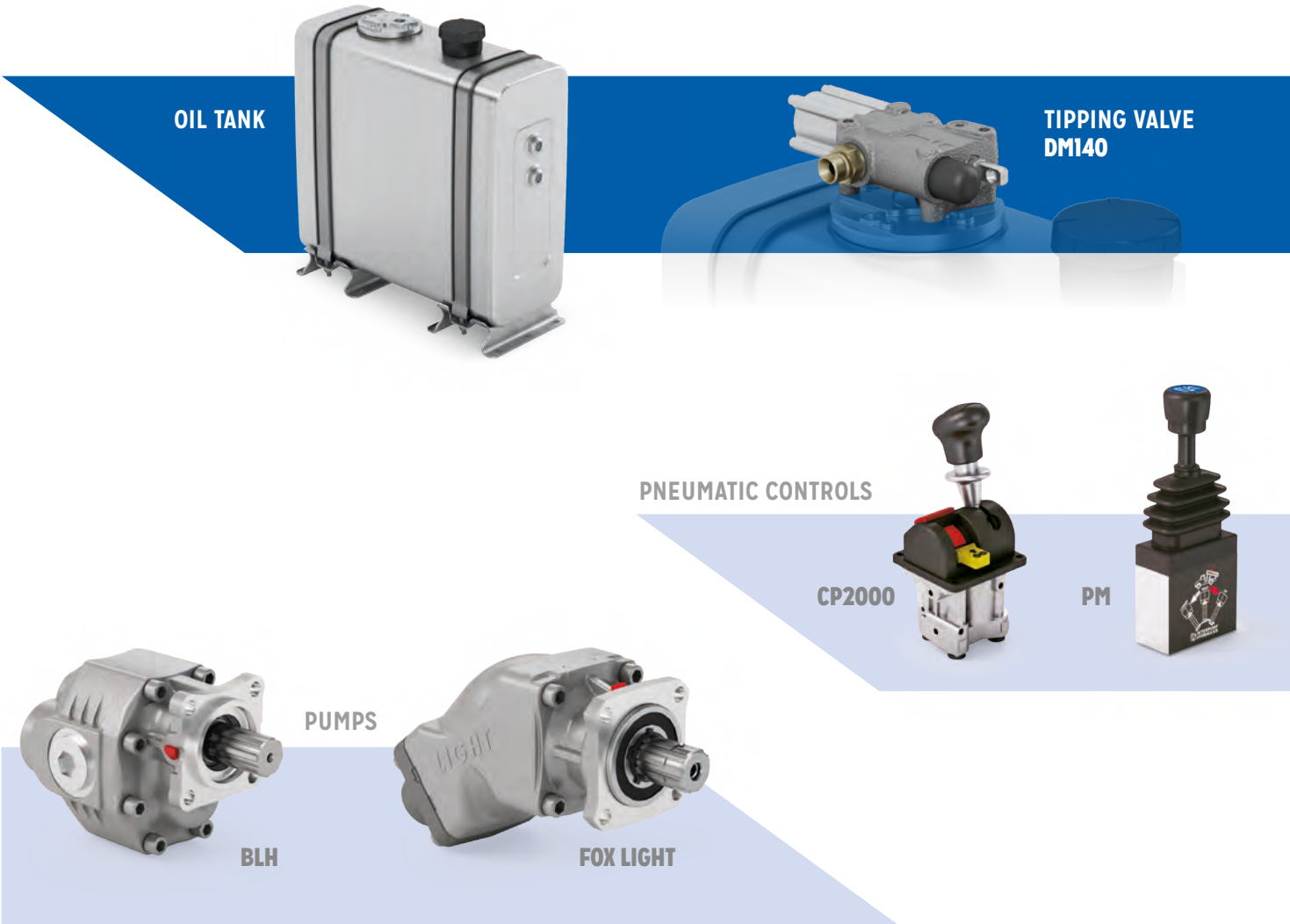


FOX LIGHT



TIPPING VALVE DM140 ON TANK

Wet Kit K1100110017000	BLH + CP2000	p 12
Wet Kit K1100110018000	BLH + PM	p 13
Wet Kit K1100210808000	FOX LIGHT + CP2000	p 14
Wet Kit K1100210809000	FOX LIGHT + PM	p 15



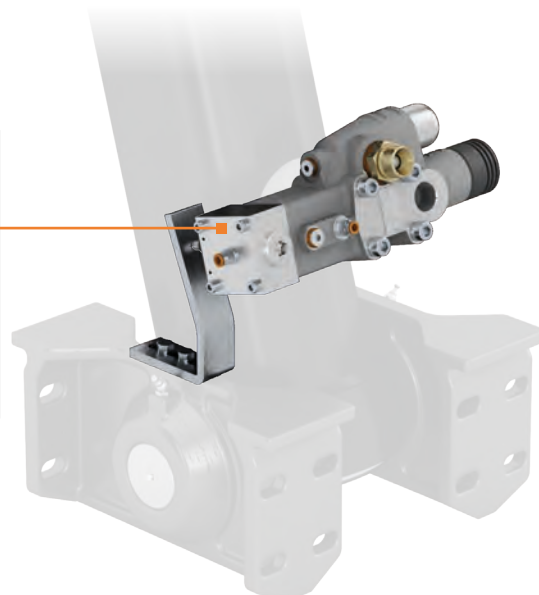
OIL TANK

Rear cabin steel tank complete with mounting brackets, low profile return flange or tipper valve mounting flange.
Dual oil level indicator for multiple application.
100 & 135 litres gross volume.



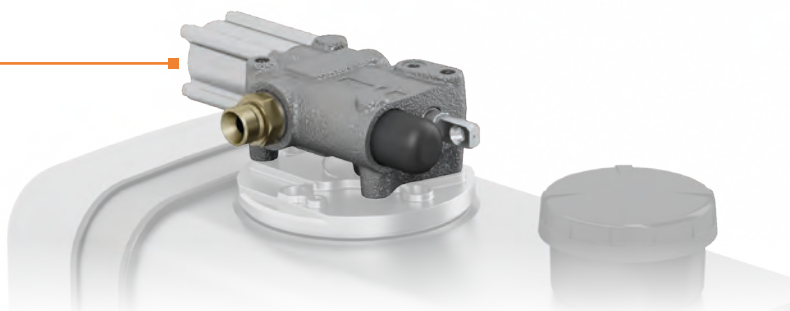
SI60 TIPPING VALVE

160 l/min pneumatic operated tipping valve for cylinder oil inlet direct mount. Incorporated relief and check valve.
Optional built-in pneumatic end of stroke switch.



DM140 TIPPING VALVE

150 l/min tipper valve for remote mounting on oil tank filter plate or inline on chassis. Includes built-in relief and check valve and a mechanical end-of-stroke provision.





PM PNEUMATIC CONTROL

Modular pneumatic cab control with proportional lowering and provision for auxiliary switched for PTO and tailgate control. Different configurations available.



CP2000-2 PNEUMATIC CONTROL

Pneumatic cab control with PTO switching option. Proportional lowering, compact design, console available on demand.



FOX LIGHT BENT-AXIS PISTON PUMP

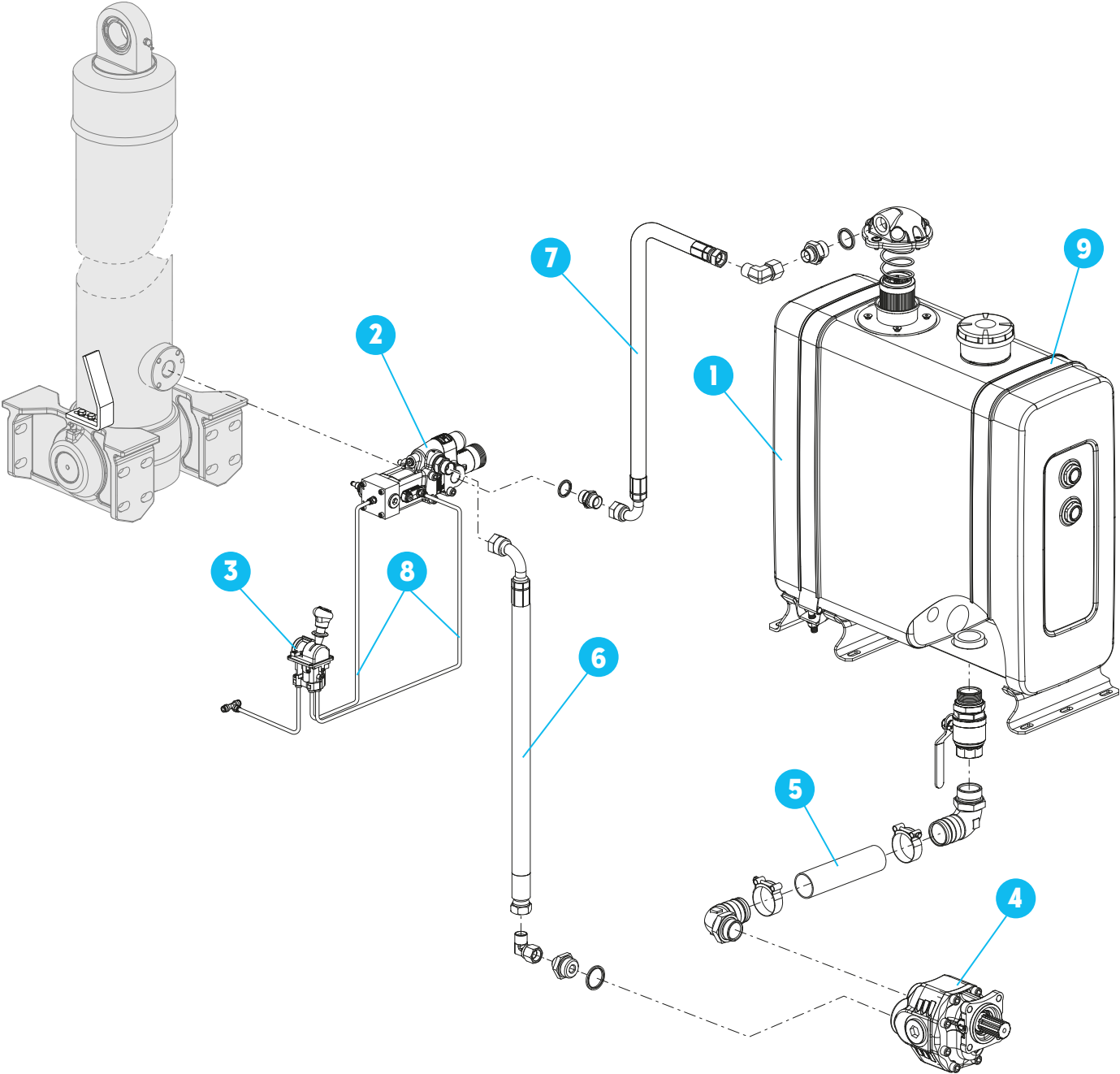
Bent-axis monodirectional piston pump. ISO 14 (DIN 5462) shaft. Displacement up to 108 cc rev. - continuous operating pressure up to 250 bar.



BLH GEAR PUMP

Bi-rotational 4-bolt gear pump, ISO 14 (DIN 5462) shaft, for tipper. Displacement up to 125 cc rev. - max intermittent operating pressure up to 250 bar.

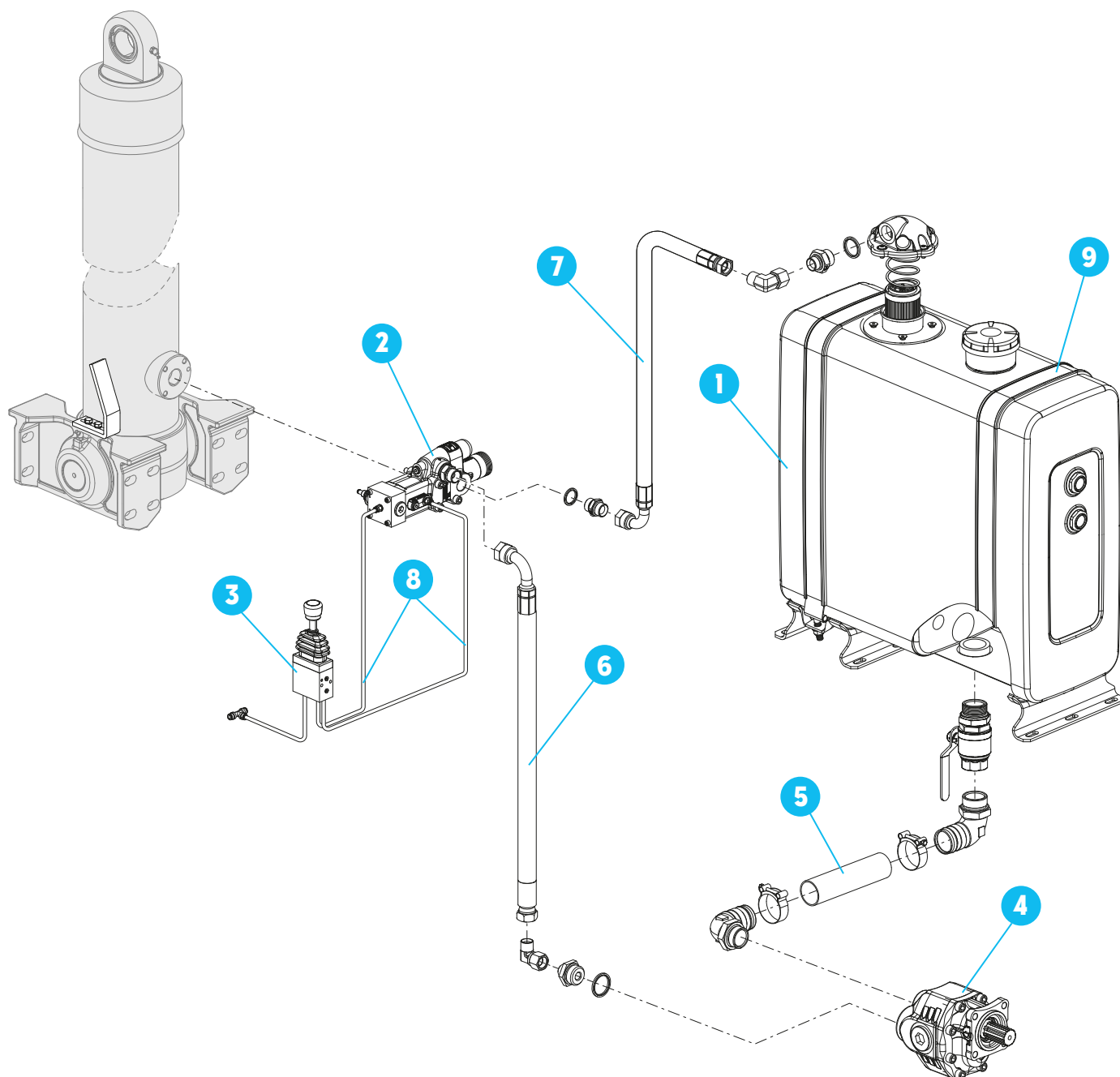
K1100110015000



Pos.	Description
1	Oil tank - rear mounted 100 litres*
2	Hydraulic distributor, S160, TVM 250 Bar
3	Pneumatic control, monostable lever
4	Gear pump, 105 cc displacement, bi-rotational, 4 holes
5	Hose R4 Ø51 mm L=2000 mm (suction line)
6	Hose R2T G3/4" FD-F90 L=2500 mm (pressure line)
7	Hose R2T G3/4" FD-F90 L=1700 mm (pressure line)
8	Rilsan hose 6x4, L=25 m
9	Bracket kit

*) 135 litres available on request

K1100110016000



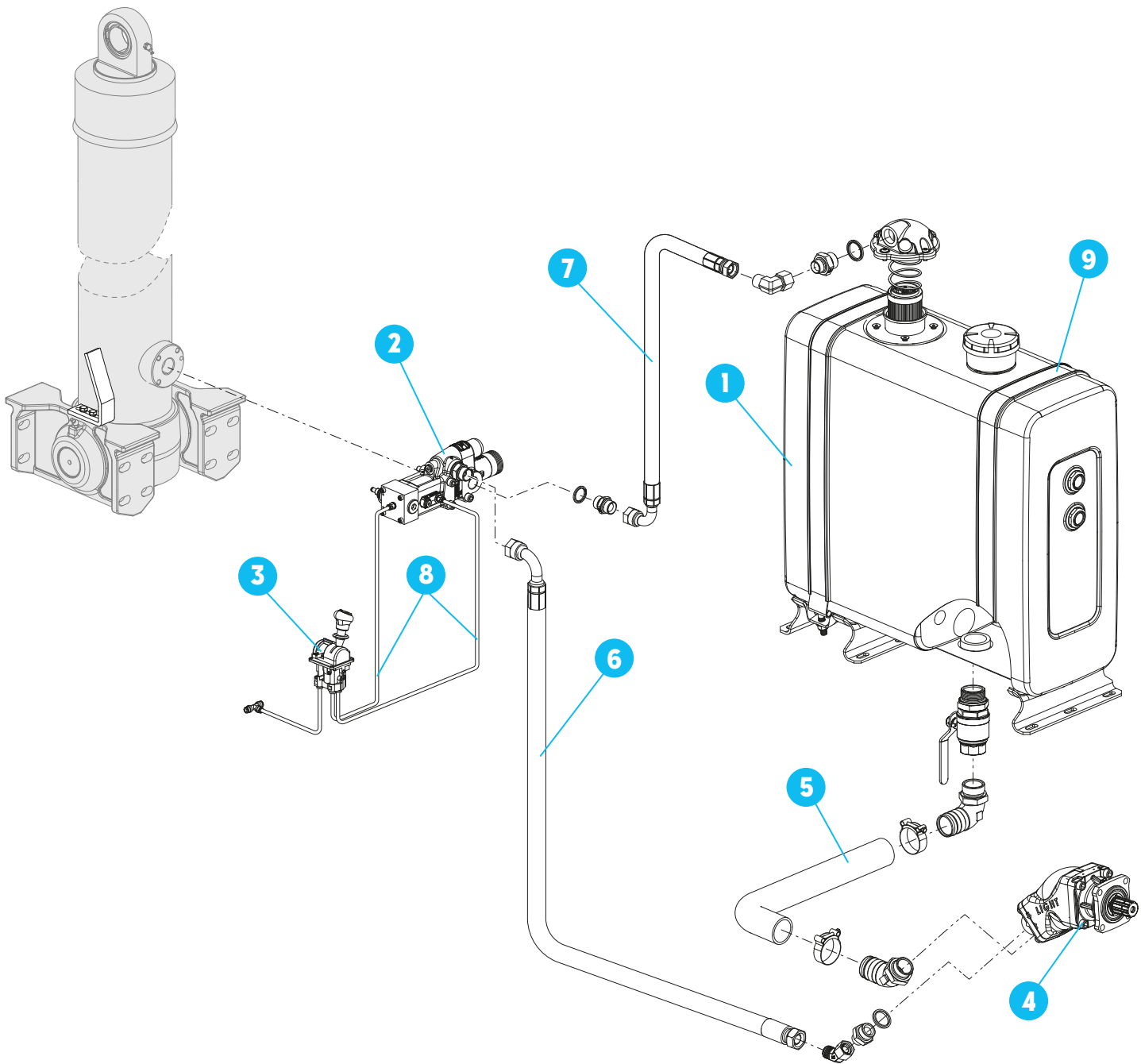
Pos.	Description
1	Oil tank - rear mounted 100 litres*
2	Hydraulic distributor, S160, TVM 250 Bar
3	Modular pneumatic control, monostable lever
4	Gear pump, 105 cc displacement, bi-rotational, 4 holes
5	Hose R4 Ø51 mm L=2000 mm (suction line)
6	Hose R2T G3/4" FD-F90 L=2500 mm (pressure line)
7	Hose R2T G3/4" FD-F90 L=1700 mm (pressure line)
8	Rilsan hose 6x4, L=25 m
9	Bracket kit

*) 135 litres available on request

Wet Kits for Rigid Truck ■ rev. 11-2024

IPH reserves the right to modify the technical data listed without notice, the aforementioned data are not binding.

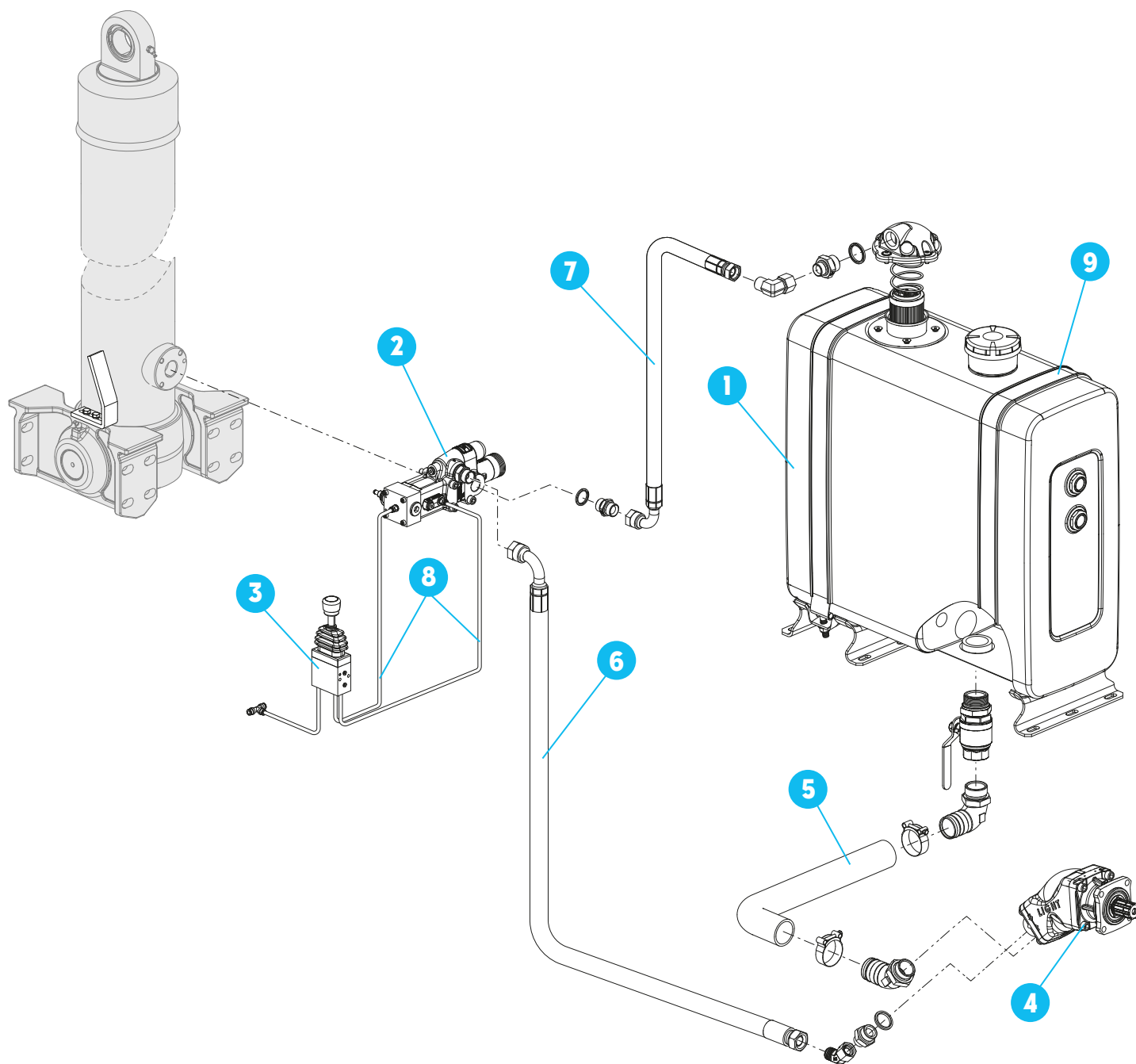
K1100210806000



Pos.	Description
1	Oil tank - rear mounted 100 litres*
2	Hydraulic distributor, S160, TVM 250 Bar
3	Pneumatic control, monostable lever
4	Piston pump, 108 cc displacement, anticlockwise, 4 holes
5	Hose R4 Ø51 mm L=2000 mm (suction line)
6	Hose R2T G3/4" FD-F90 L=2500 mm (pressure line)
7	Hose R2T G3/4" FD-F90 L=1500 mm (pressure line)
8	Rilsan hose 6x4, L=25 m
9	Bracket kit

*) 135 litres available on request

K1100210807000



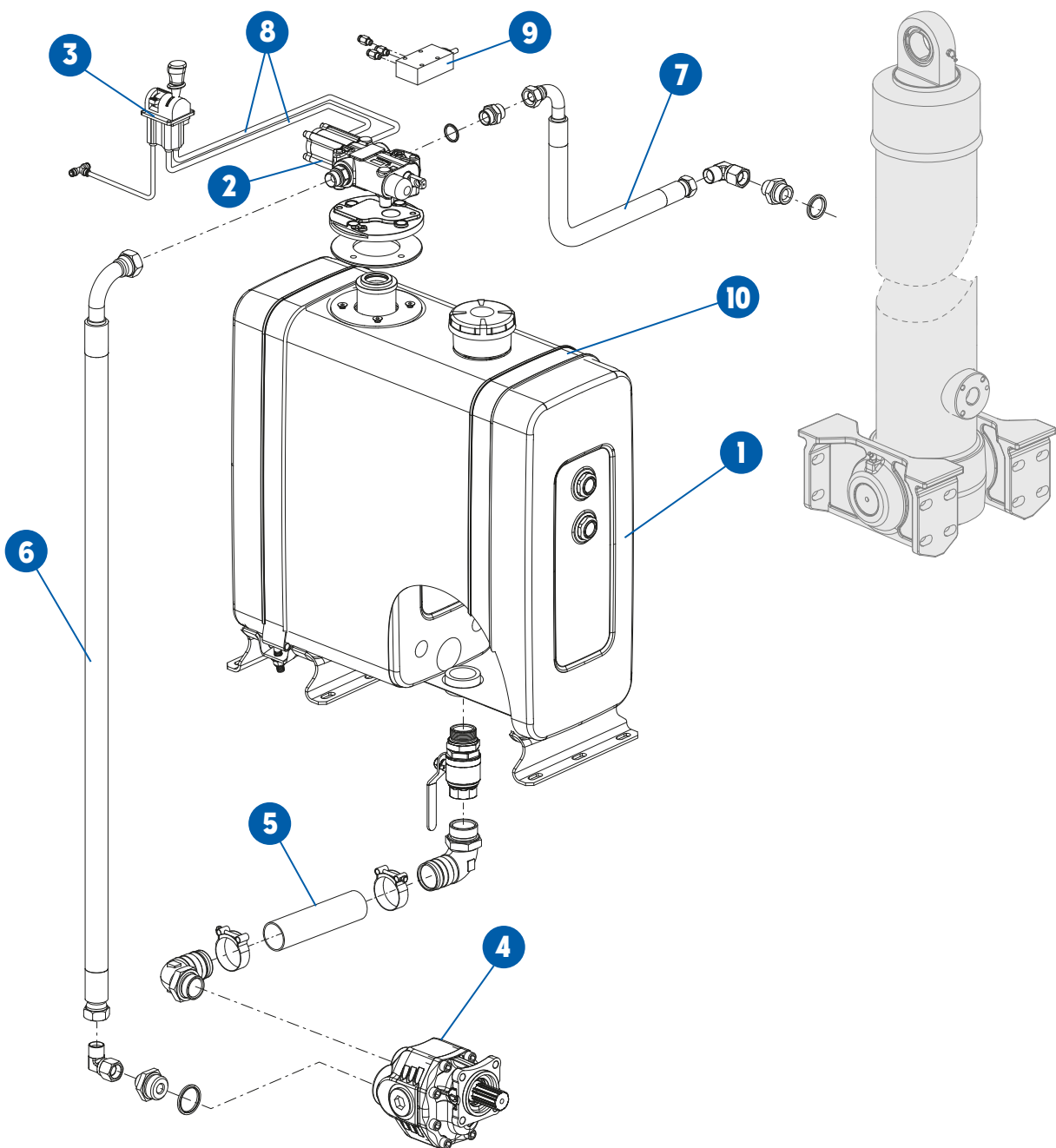
Pos.	Description
1	Oil tank - rear mounted 100 litres*
2	Hydraulic distributor, S160, TVM 250 Bar
3	Modular pneumatic control, monostable lever
4	Piston pump, 108 cc displacement, anticlockwise, 4 holes
5	Hose R4 Ø51 mm L=2000 mm (suction line)
6	Hose R2T G3/4" FD-F90 L=2500 mm (pressure line)
7	Hose R2T G3/4" FD-F90 L=1500 mm (pressure line)
8	Rilsan hose 6x4, L=25 m
9	Bracket kit

*) 135 litres available on request

Wet Kits for Rigid Truck ■ rev. 11-2024

IPH reserves the right to modify the technical data listed without notice, the aforementioned data are not binding.

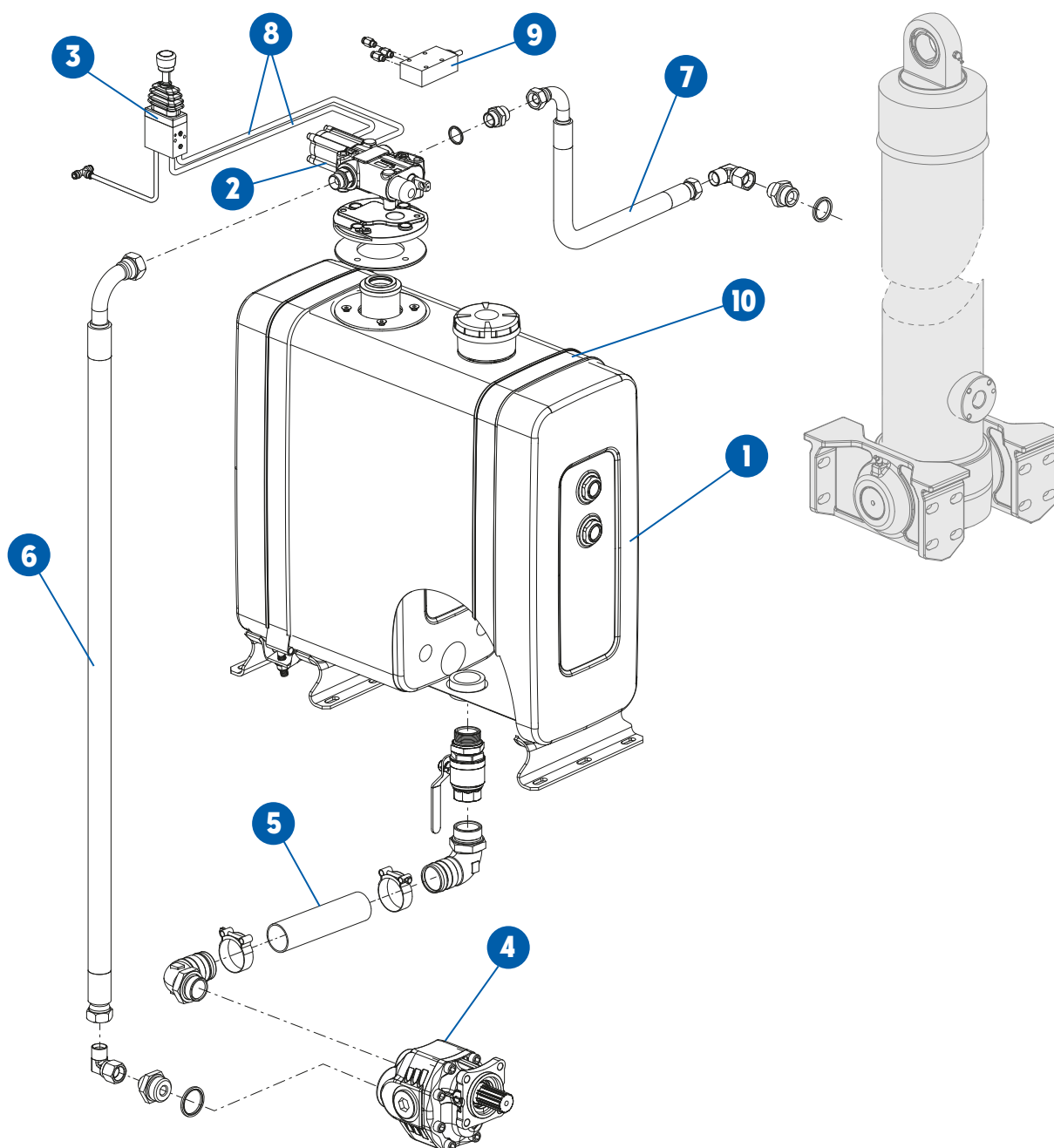
K1100110017000



Pos.	Description
1	Oil tank - rear mounted 100 litres*
2	Hydraulic distributor, DM140, TVM 250 Bar
3	Pneumatic control, monostable lever
4	Gear pump, 105 cc displacement, bi-rotational, 4 holes
5	Hose R4 Ø51 mm L=2000 mm (suction line)
6	Hose R2T G3/4" FD-F90 L=2500 mm (pressure line)
7	Hose R2T G3/4" FD-F90 L=1700 mm (pressure line)
8	Rilsan hose 6x4, L=25 m
9	Pneumatic end-of-stroke
10	Bracket kit

*) 135 litres available on request

K1100110018000

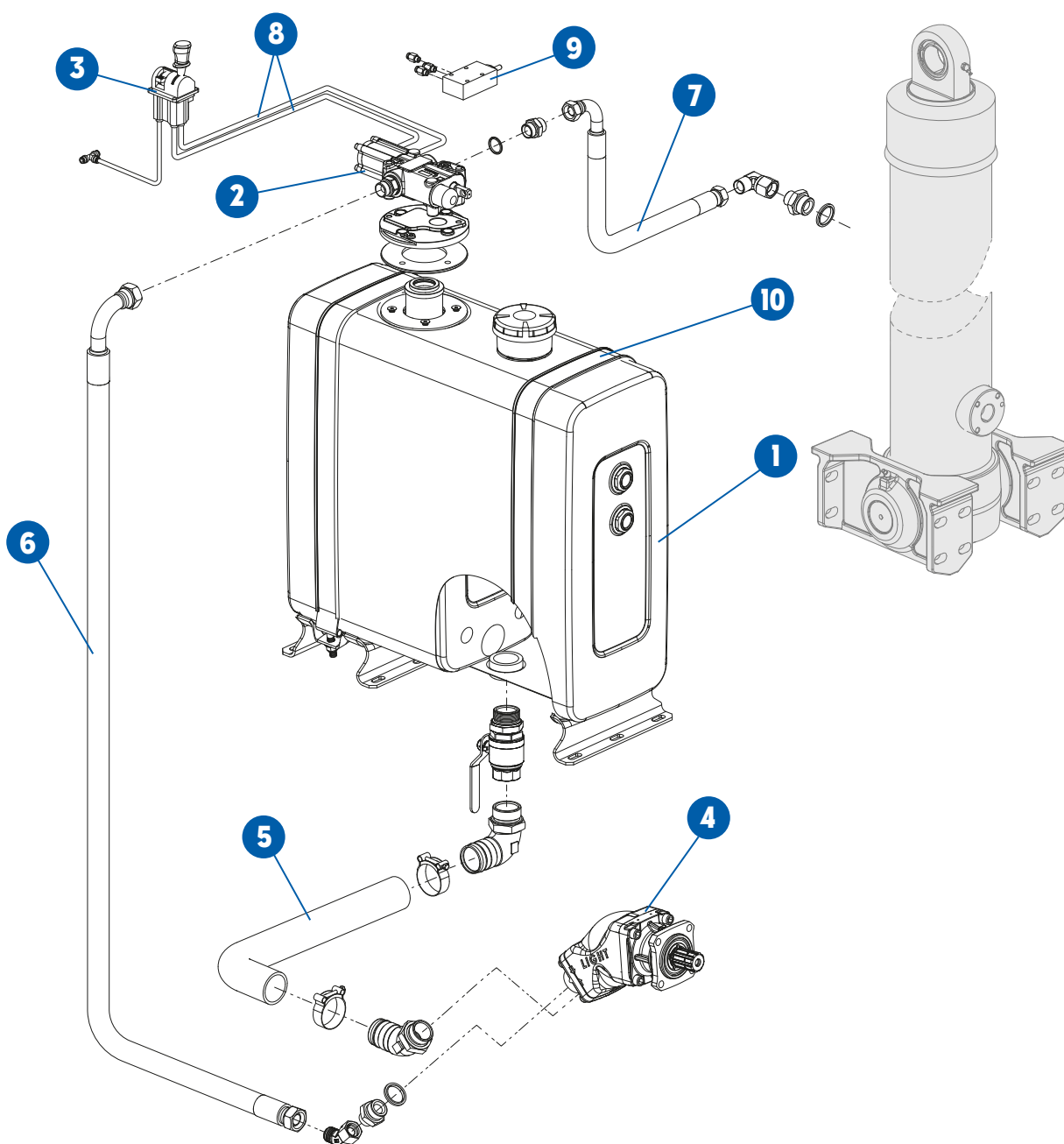


Pos.	Description
1	Oil tank - rear mounted 100 litres*
2	Hydraulic distributor, DM140, TVM250 Bar
3	Modular pneumatic control, monostable lever
4	Gear pump, 105 cc displacement, bi-rotational, 4 holes
5	Hose R4 051 mm L=2000 mm (suction line)
6	Hose R2T G3/4" FD-F90 L=2500 mm (pressure line)
7	Hose R2T G3/4" FD-F90 L=1700 mm (pressure line)
8	Rilsan hose 6x4, L=25 m
9	Pneumatic end-of-stroke
10	Bracket kit

*) 135 litres available on request

Wet Kits for Rigid Truck ■ rev. 11-2024

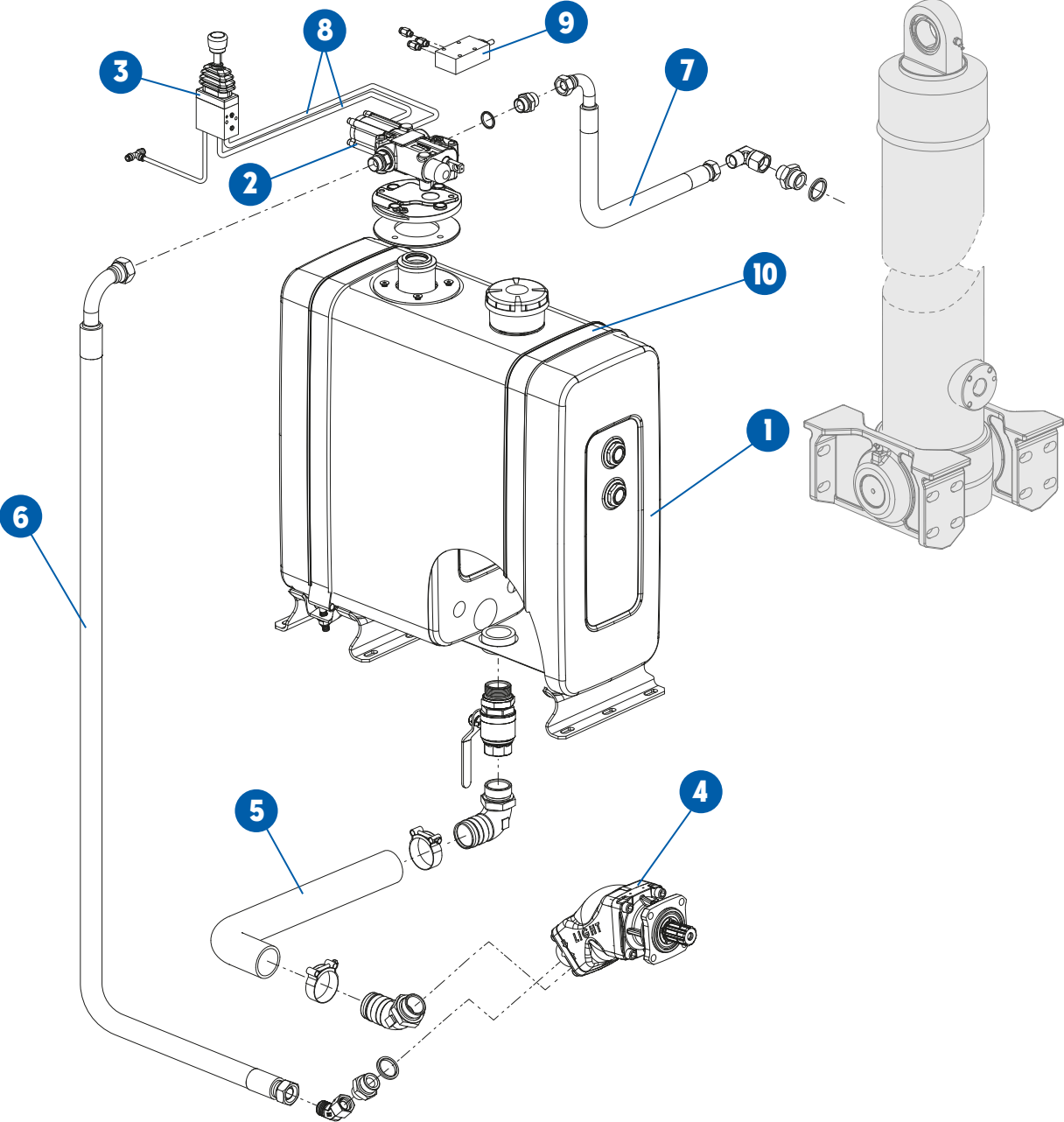
K1100210808000



Pos.	Description
1	Oil tank - rear mounted 100 litres*
2	Hydraulic distributor, DM140, TVM 250 Bar
3	Pneumatic control, monostable lever
4	Piston pump, 108 cc displacement, anticlockwise, 4 holes
5	Hose R4 Ø51 mm L=2000 mm (suction line)
6	Hose R2T G3/4" FD-F90 L=2500 mm (pressure line)
7	Hose R2T G3/4" FD-F90 L=1500 mm (pressure line)
8	Rilsan hose 6x4, L=25 m
9	Pneumatic end-of-stroke
10	Bracket kit

*) 135 litres available on request

K1100210809000




Pos.	Description
1	Oil tank - rear mounted 100 litres*
2	Hydraulic distributor, DM140, TVM 250 Bar
3	Modular pneumatic control, monostable lever
4	Piston pump, 108 cc displacement, anticlockwise, 4 holes
5	Hose R4 Ø51 mm L=2000 mm (suction line)
6	Hose R2T G3/4" FD-F90 L=2500 mm (pressure line)
7	Hose R2T G3/4" FD-F90 L=1500 mm (pressure line)
8	Rilsan hose 6x4, L=25 m
9	Pneumatic end-of-stroke
10	Bracket kit

*) 135 litres available on request

Headquarters

Interpump Hydraulics SpA
Via A. Mingozzi, 6
40012 Calderara di Reno (BO) - Italy

Ph: +39 051 6460511

 info@iph.it

 iph.it



A member of



Worldwide network

Australia

Newcastle
Ph: +61 241 1300 30 30 10
info@megapacific.com.au
www.megapacific.com.au

Germany

Meinerzhagen
Ph: +49 2354 70885-0
info@ifs-germany.de
www.interpumpfluidsolutions.com/de/

South Africa

Johannesburg
Ph: +27 011 824 5494
sales@interpumpsouthafrica.co.za
www.interpumpsouthafrica.co.za

Brazil

Caxias do Sul / RS
Ph: +55 054 3289 7000
interpump@interpump.com.br
www.interpump.com.br

India

Hosur
Ph: +91 7397 734 701
info@interpumphydraulicsindia.com
www.iphindia.co.in

UAE

Warehouse No. RA08SD03
Jabel Ali - Dubai
P.O.Box 261466
info@interpump.ae
www.interpump.ae

Chile

Santiago de Chile
Ph: +56 2 29633870
contacto@hydrocar.cl
www.hydrocar.cl

New Zealand

Mount Maunganui
Ph: +64 7 928 7722
sales@megapacific.co.nz
www.megapacific.co.nz

UK

Kidderminster DY10 2RN
Ph: +44 01384 292861
hydraulics@interpumpfluidsolutions.co.uk
www.interpumpfluidsolutions.com/uk

China

Wuxi
Ph: +86 0510 85360595
xs@interpump.net.cn
www.iph.net.cn

Peru

Lima
Ph: +51 1 3434231
contacto@iph.pe
www.hydrocar.pe

USA

Muncie
Ph: +1 765-284-7721
www.munciepower.com/contact
www.munciepower.com

France

Paris
Ph: +33 (0)1.60.62.56.56
commercial@iphfrance.fr
www.iph.it

Russia

Moscow
Ph: +7 495 7804083
info@iph-rus.ru
www.iph-rus.ru